

ONLINE

WATER FILTERS

INSTALLATION INSTRUCTIONS FOR WK200/300/400 WATER FILTER KITS

CONTENTS

1. Filter head, bracket, cartridge
2. Stem Elbows
3. Isolating valve
4. Tube 3 metres
5. Tap
6. Connector for tap



IMPORTANT NOTES

You should read these instructions fully before starting work.
This unit must be installed in compliance with local regulations.
The unit must not be installed in any position where it could freeze.

TOOLS REQUIRED

Screwdriver
Adjustable Spanner
Stanley Knife
Drill (with 3mm & 12mm drill bit)
Pencil
Copper tube cutter

INSTALLATION

The installation can be broken down into 4 stages
Installation of isolating valve
Installation of tap
Mounting of filter unit
Connection of tubing and commissioning

GENERAL PRECAUTIONS

Install on cold water lines only

Maximum pressure 120 p.s.i – minimum pressure 25 p.s.i.

Maximum temperature 100 deg F.

WARNING THIS FILTER MUST BE PROTECTED FROM FREEZING. FAILURE TO DO SO MAY RESULT IN CRACKING OF THE FILTER AND WATER LEAKAGE.

INSTALLING ISOLATING VALVE (3)

(refer to figure 1)

Locate the pipe supplying the cold water to your kitchen sink. This should be 15mm copper, in the unlikely event this it is not contact your dealer for advice since this valve is unsuitable for any other type of pipe. (If you have a water softener installed you must connect the isolating valve to the hard water inlet side, not the softened side).

Turn off the cold water supply and drain the cold main. This can be done by opening the cold tap and then running the hot tap for a minute or so to open the ball valve in the tank. If you have a mains fed water system such as a combi boiler or unvented system then you will not need to do this.

Select a straight length of copper on the cold supply to the sink with at least an 80mm clear run. Use a copper cutter to remove a section 15mm long at least 35mm from the end. Pipe must be clean and free of paint/solder/flux etc. If you have to use a saw (not recommended) you will have to ensure that the ends of the pipe are filed completely free of sharp/rough ends because this will damage the sealing 'O' rings. See figure 3 for how to connect the pushfit fittings. Ensure valve is closed (lever at right angle as in fig 1) and turn water supply back on. Check for leaks.

FIGURE 1



FITTING OF TAP 5 (REFER TO FIG 2)

Select the spot for the tap to be fitted on the sink and, using the black plastic stiffener as a guide, mark the spot to be drilled with a pencil. Before drilling it is very important to make sure that the area underneath this spot is accessible and flat for the nut, stiffener and spring washer to seat on, and that you can get access to tighten the nut and make the tube connection.

Drill a pilot hole with a 3mm drill bit then follow through with a 12mm bit. (Never attempt to drill a vitreous china sink, locate the tap in the worktop instead). If you are drilling a porcelain enamelled sink place a piece of tape over the spot to be drilled to prevent chipping.

In most installations the faucet will be assembled using the larger lower body as in fig 1, in which case discard the small lower body. If you are not using the large lower body (this will be in circumstances where the corner of the sink is too small for it or it is being installed in an extra thick worktop where you need the extra length of the stud) then assemble using the small lower body and discard the large one. In either case ensure the 'O' is in place.

Insert tap through hole in sink or worktop and then place the black plastic stiffener and spring washer on to the threaded tail, screw nut on and tighten using a 7/16" or adjustable wrench until it is tight and tap does not rotate.

Finally push the small adaptor (6) on to the tail of the tap.

MOUNTING THE FILTER UNIT

Select a place to mount the filter unit bearing in mind the following considerations. You need at least 1½" underneath the unit to allow for cartridge changes. **NOTE DIRECTION OF FLOW the inlet connection is on the left of the unit.** It must not be installed in direct sunlight or where freezing may occur. Allow enough space at either end for the tubes to be connected without kinking. If the selected location is some distance from the tap and/or saddle valve you may need some extra tubing. Mount the unit by offering it into the selected location and marking the position for the bracket with a pencil. Fix with screws (if fixing to a wall you will need wall plugs), slip unit over screws and tighten.

CONNECTING TUBING

This system uses speed-fit fittings throughout - refer to figure 3

Observe the following precautions: -

Great care must be taken not to kink, flatten or squash the tube as this may cause stress to the wall of the tube, which can subsequently fail after a period of time. If necessary, use the stem elbows (2) on the inlet and outlet of the filter head to reduce the space required.

When cutting the tube use a very sharp knife (e.g. a Stanley knife) to ensure the ends are cut square without flattening the tube.

Be careful not to scratch the tube when passing through holes etc. as this can cause a leak in the pushfit fittings.

Do not allow the tubing to lay against hot pipes or sharp edges or be exposed to direct sunlight or freezing.

Allow a slight sag in the tubes to prevent any strain on the tube or fittings.

Insert the tubing into the isolating valve, then measure and cut enough to run to the inlet side of the filter. Check that you have the flow direction correct (arrows usually on top of filter housing).

Repeat the procedure from the outlet to the small adaptor on the tap

FIGURE 2

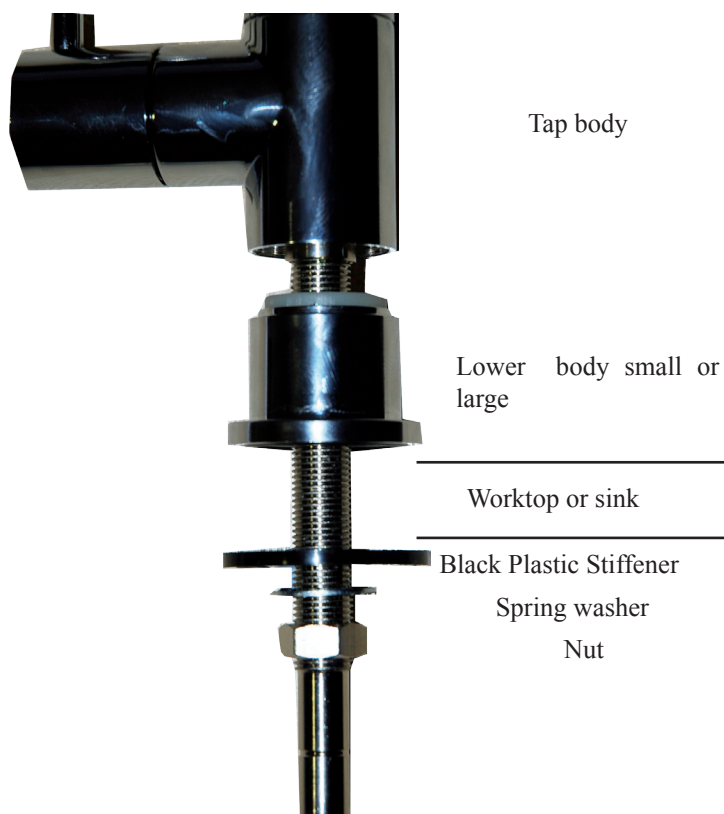
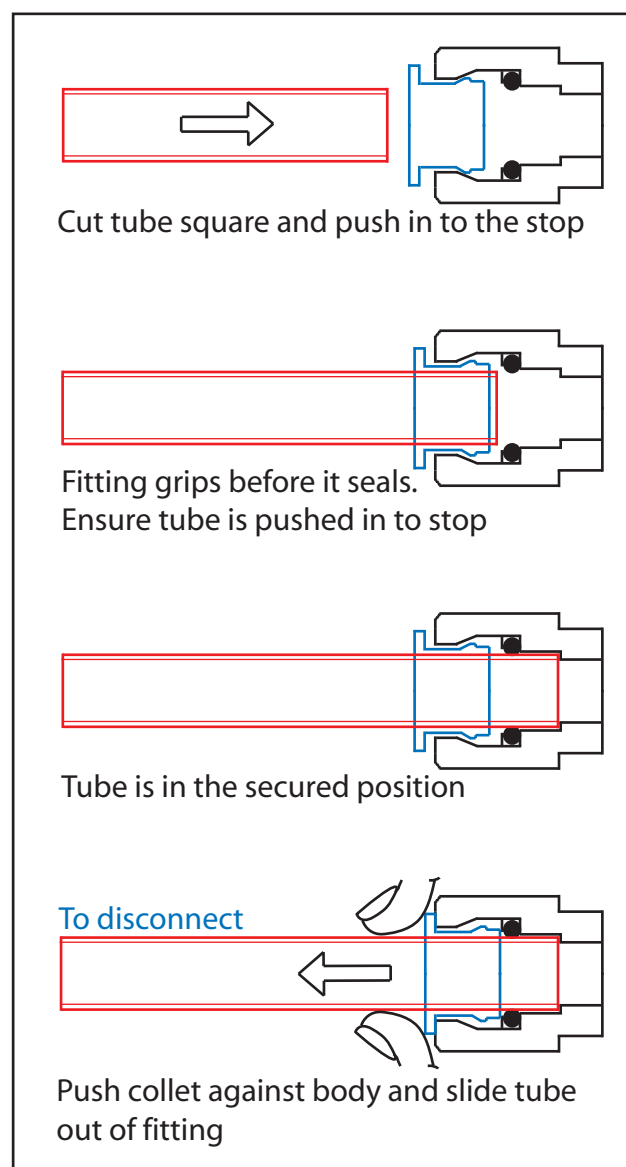


FIGURE 3



COMMISSIONING

Check cartridge is tight on to filter head hand tight is sufficient. Make sure all fittings are tight.

Open the isolating valve to allow water to the unit while watching for leaks. The water coming from the tap will be discoloured initially as all the air and carbon fines are discharged from the system. Allow the unit to run continuously for at least one minute then shut tap.

Check for leaks.

OPERATING AND SERVICING

Prolonged periods of non use

If the system has not been used for several days or weeks (such as during a holiday period), it is recommended that the unit be flushed thoroughly. To do this flip the black handle up and let the water run for 5-6 minutes.

Changing Cartridges

The cartridges in this system should be changed every 6 months or sooner if the flow rate drops considerably or when tastes or odours are noticed. **Failure to do this will cause deterioration in performance and possible contamination of the unit.** See instructions for changing cartridges.

REMEMBER IF YOU HAVE ANY QUERIES OR WHEN YOU REQUIRE CARTRIDGES, PLEASE CONTACT US. WE ARE THE SPECIALISTS AND WILL BE ONLY TOO PLEASED TO HELP.

Options available from Aquamatic include:-

Extra tubing and fittings

Filter system upgrades

3 way kitchen mixer taps. These incorporate hot,cold and filtered water all in one tap.

TROUBLE SHOOTING

Leaks from pushfit fittings:-

Tube is scratched or damaged. Depressurise system (Close isolating valve and open tap) disconnect tube (see fig 3) cut back to a clean piece of tube and reconnect.

Low water flow:-

Ensure isolating valve and mains water tap are fully open.

Check flow at tap. Around 2 litres per minute is ideal.

Disconnect tube from filter inlet and check flow from saddle valve.

Unpleasant tastes and odours:-

Cartridge may have been fouled by dirty incoming water. Change cartridge (see cartridge changing instructions).

Reappearance of scale or film on tea on WK400 model:-

Cartridge is depleted. Change cartridge, this model may need earlier changes depending on local water hardness and usage

CARTRIDGE CHANGING INSTRUCTIONS

The cartridges in this system should be changed every 6 months or sooner if the flow rate drops considerably or when tastes or odours are noticed. WK400 system may need earlier changes depending on local water hardness and usage.

To change cartridge proceed as follows:-

1. Shut off supply by closing the isolating valve
2. Open the tap on the sink or worktop to relieve the pressure and confirm that the water is off.
3. Screw out old cartridge and screw new one in place, handtight is sufficient.
4. Open the saddle valve to allow water to the unit while watching for leaks. The water coming from the tap will be discoloured initially as all the air and carbon fines are discharged from the system. Allow the unit to run continuously for at least one minute then shut tap.
5. Check for leaks.

REMINDER SERVICE

Having successfully installed your new filter system, the last thing you need to do is contact us to ensure we have your details so that we can send you a cartridge change reminder at the relevant time.

Please see our contact details on the back of these instructions.

ONLINE WATER FILTERS

Assembled and distributed in the UK and Europe by

Aquamatic
P.O.Box 117
Godalming
Surrey
GU8 4FF
UK

Tel 44 (0)1483 861598

Fax 44 (0)1483 861180

Email:- sales@aquamatic.co.uk
www.onlinewaterfilters.com

Opening hours:- 9.00 - 4.30 Mon-Fri (except Bank Holidays)

Helpline 44 (0)1483 861598